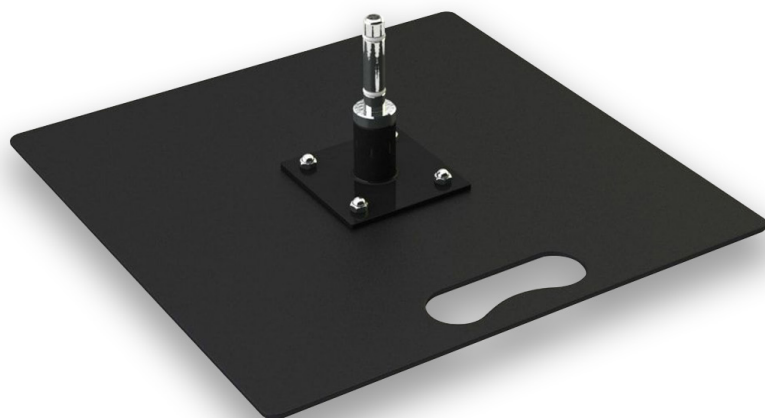


**PLAQUE ACIER 5 KG**



**PLAQUE ACIER 7 KG**



**PLAQUE ACIER 10 KG**



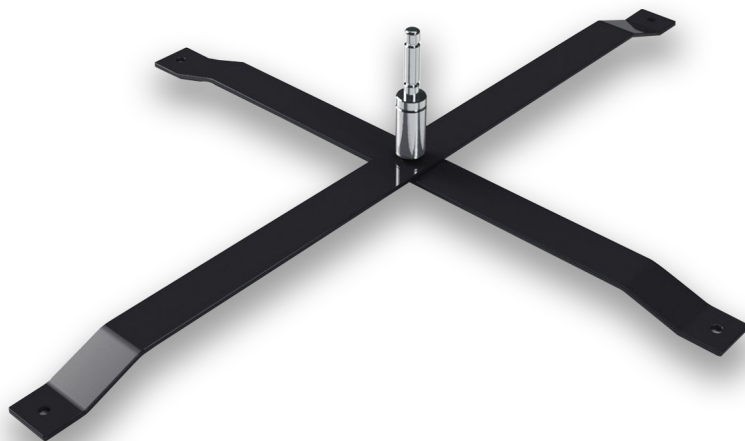
**SOCLE BÉTON PVC 10 KG**



**CROISILLON ACIER 1.5 KG**



**CROISILLON ACIER NOIR 4 KG**



**PIEUX FORANT - 1 KG**



**EN OPTION : POCHE LESTABLE 10 L**

